

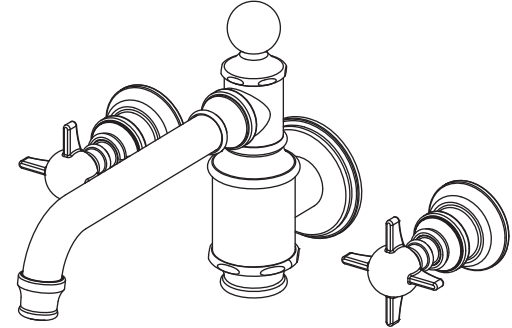
Beautifully
Traditional

ARCADÉ™

TECHNICAL DETAILS

For full technical details on all our products,
please visit our website www.arcadebathrooms.com

Arcade three hole basin mixer taps - wall mounted
- without pop up waste ARC16, ARC16 CHR



INSTALLATION INSTRUCTIONS

INSTALLATION INSTRUCTIONS

Please read these instructions carefully and keep in a safe place for further reference.

General Installation Requirement

The installation must comply with regulations of the Local Water Authority as contained in their bylaws. It will be necessary to fit non-return valves on both the hot and cold feeds. It is very important that all pipework is flushed thoroughly after installation to avoid impurities damaging the ceramic discs.

Minimum/Maximum working pressure

These taps are suitable for high and low pressure installations. They are fitted with quarter turn ceramic disc headwork which provides a smooth movement. The minimum work pressure is 0.2 bar. The maximum work pressure is 5 bar. If the mains pressure is over 5 bar, a pressure reducing valve should be fitted.

Approvals

All taps are manufactured using materials tested and approved under the Water Bylaws Scheme and comply with requirements of European standard EN200 where applicable.

Preparations and bylaw requirements

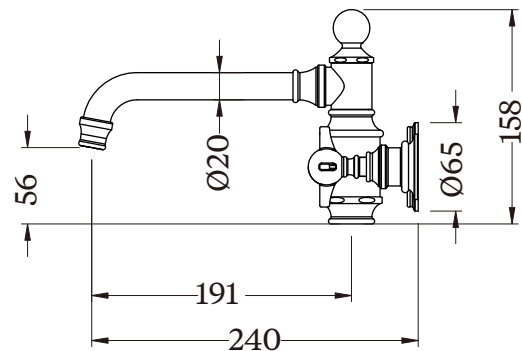
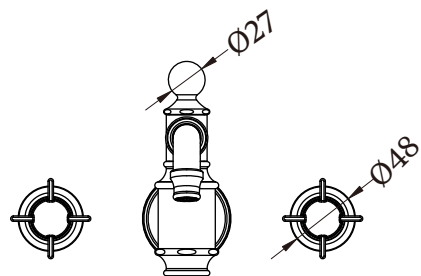
Water Bylaws require that where hot water is supplied from tank and cold from mains, non return valves are fitted on both hot and cold pipes as close as possible to the tap. These are not supplied. Where combination boilers are fitted, it is only necessary to shut off the incoming mains and turn the boiler off. Non return valves are not required.

Warning

Before installing the new taps, it is essential that you thoroughly flush through the supply pipes in order to remove any remaining swarf, solder or other impurities. Failure to carry out this simple procedure could cause problems or damage to the working of the taps.

These hints are prepared for your guidance; you must exercise due care at all times. We do not accept responsibility for any problems that may occur through incorrect installation.

DIMENSIONS



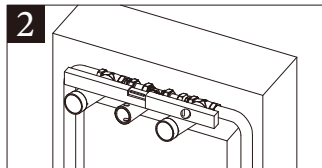
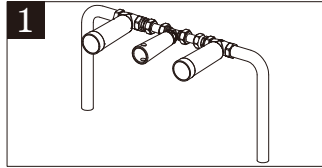
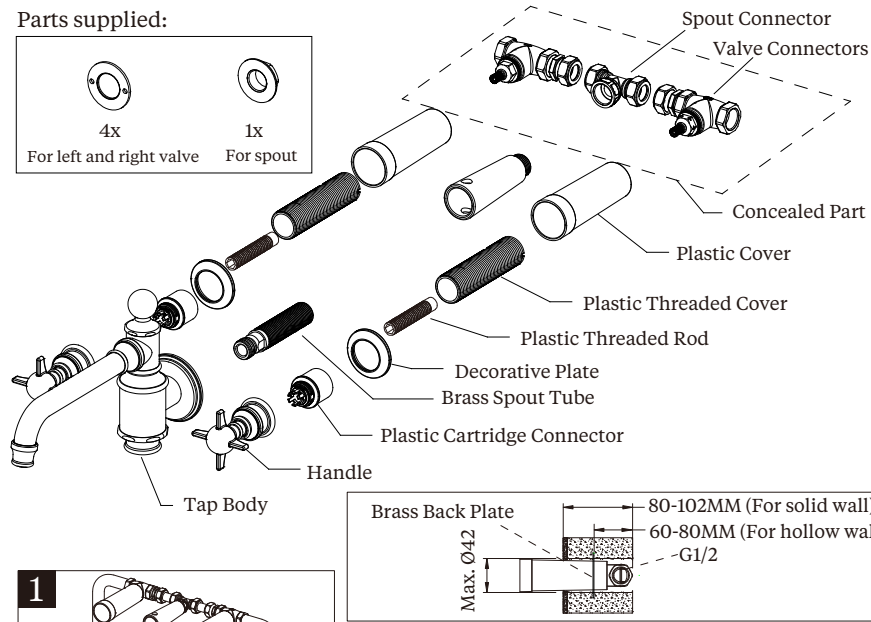
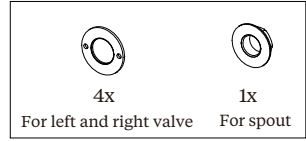
NOTE: ALL DIMENSIONS IN MILLIMETRES

Beautifully Traditional

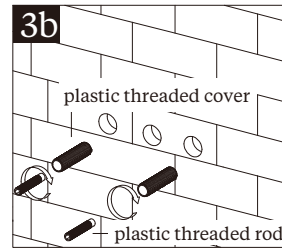
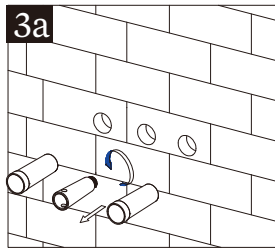
ARCADE™

Arcade three hole basin mixer taps - wall mounted
- without pop up waste
ARC16, ARC16 CHR

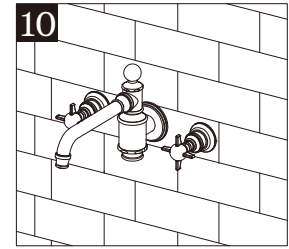
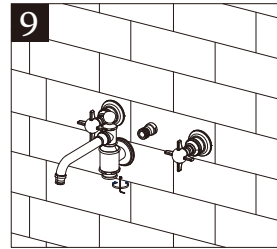
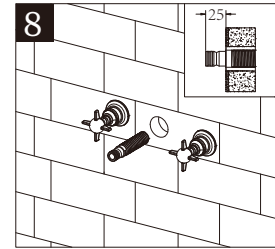
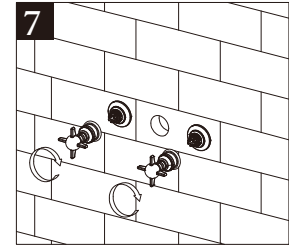
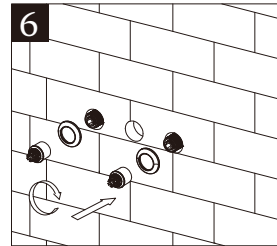
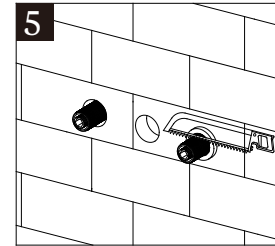
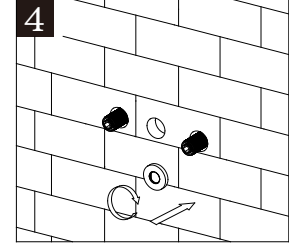
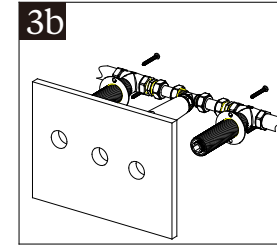
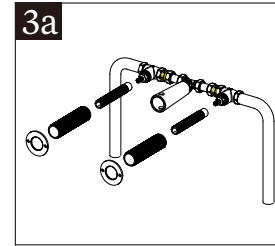
Parts supplied:



For solid wall



For hollow wall



INSTALLATION INSTRUCTIONS

First shut off your water heating system, then with your mains stop cock closed, open the lowest cold and hot taps in the house and allow to run until the cold storage tank and pipes are empty (the hot storage cylinder always remains full). Fitting isolating valve to inlet feeds is recommended for ease of maintenance.

INSTALLATION

Note: Remember to turn off mains water supply before connecting to any existing pipe work.

- 1: Connect the left and right valve connectors, and the spout connector with hot and cold water supply. Copper pipes or flexible hoses can be used for the connections depending on the onsite installation.
- 2: Make sure that the 3 concealed connectors are aligned. Turn on the valves by turning the left and right plastic covers to ensure there is no leaking. Then turn off the valves.
- 3: For solid wall:
 - a. Tile the wall. The thickness of the tile should be between 80 to 102MM from the bottom of the connectors. Then take off the white plastic covers from both left and right valve connectors, and also take off the black plastic cover from the spout connector.
 - b. Insert the plastic threaded rods into the left and right valve connectors, then screw on the plastic threaded covers.

For hollow wall and full access to the back of the wall is available:

- a. Take off the white plastic covers from both left and right valve connectors. Insert the plastic threaded rods into the left and right valve connectors, screw the brass back plates onto the plastic threaded covers, then screw the plastic threaded covers onto the valve connectors.
 - b. Insert the plastic covers through the holes on the wall. Make sure the bottom of the connectors is 60~80mm away from the back of the wall (assuming the thickness of the wall is 20mm). Fix the back plate to the back of the wall. (Wall fixings are not included.)
- 4: Screw the brass back plate onto the plastic threaded covers.
 - 5: Cut the plastic threaded covers and plastic threaded rods so that they are not

protruding from the brass back plate. Then take off the brass back plate.

- 6: Slide the decorative plate onto the plastic cartridge connector, then screw the cartridge connector onto the black plastic threaded cover and black plastic threaded rod.
- 7: Screw the tap handle onto the cartridge connector.
- 8: Insert the brass spout tube into the spout connector. Cut the spout tube from the end without the O rings so that it is 25mm protruding from the tile.
- 9: Push the spout onto the spout tube, and tighten the grub screw.

ATTENTION

Having first checked all new connections, turn on the mains stop cock, close all taps except the new taps and as the system starts to refill, check for leaks. Once you have satisfied yourself that there are no leaks, switch on the water heating.

MAINTENANCE

Note : Remember to turn off the water supply before commencing any maintenance.

Cleaning the headwork

The concealed headwork should give trouble free service, but in the event of any problem, service is straight forward.

To remove the headwork

Unscrew the top of the tap and then use a suitable adjustable spanner (not supplied) to loosen the nut. Take the headwork out and wash it with clean running water. Make sure any trapped debris has been removed. Dry and lightly grease the seal (only use silicone grease). Refit the headwork followed by the handle body and lever.

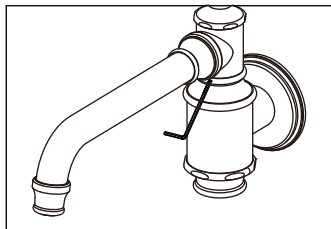
CLEANING

The nickel/chrome plate we use on our taps is very durable, nevertheless care should be taken when cleaning. It should be cleaned only with warm soapy water followed by rinsing with clean water and drying with a soft cloth. All finishes are vulnerable to acid attack and some strong substances such as household cleaners, disinfectants, denture cleaners, hair dyes, wine making and photographic chemicals can cause the surface to go black or peel.

Adjusting the spout

If necessary, please follow below steps to adjust the spout.

1. Loosen the grub screw under the spout.
2. Slightly turn the spout to the desired position.
3. Tighten the grub screw.

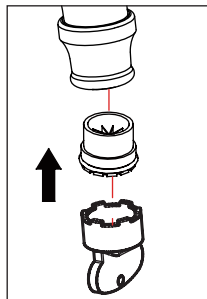
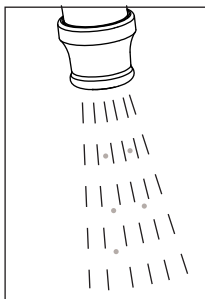
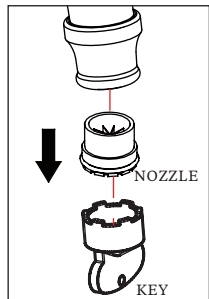


FILTER CLEANING

Taps are supplied with two different filters : low pressure Flow Straighteners (factory fitted) and high pressure Neoperl Aerators (in the box). These fit into the front of the tap nozzle.

Before use : unscrew the filter and allow the water to run freely for 5 minutes. Screw the filter back into the nozzle once all impurities have been flushed from the water supply.

Periodically : Using the key provided in the box unscrew the filter from the nozzle and rinse with clean running water. Once all loose debris and dirt has been cleared replace the filter into the nozzle and tighten with the key provided.



FILTER NOZZLES

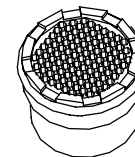
Flow Straightener Filter and Neoperl Aerator Filter

The taps are supplied with factory fitted Flow Straightener filters for low pressure water systems. If the water pressure is high (above 1 bar), replace the flow straightener filter with the high pressure Neoperl aerator filter.

Use the Neoperl key supplied in the box to unscrew the Flow Straightener from the nozzle. Replace with the Aerator filter. If you misplace the supplied Neoperl key, use the top of the spare filter to unscrew the filter from the nozzle.



FLOW STRAIGHTENER



AERATOR

THE QUALIFICATIONS

This product should only be fitted by a qualified plumber to the equivalent of UK NVQ (National Vocational Qualification) or SNVQ (Scottish National Vocational Qualification) Level 3. Should the installation be completed by a non-qualified person then the guarantee may be considered invalid.